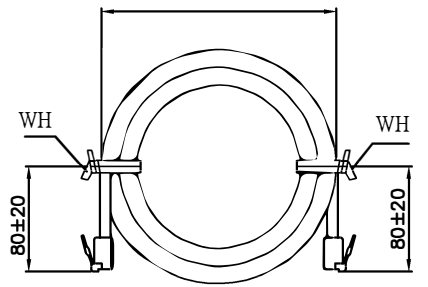
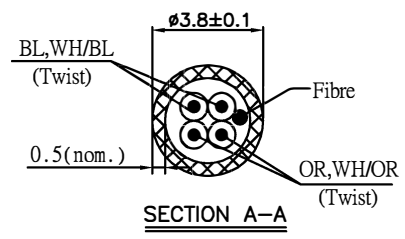
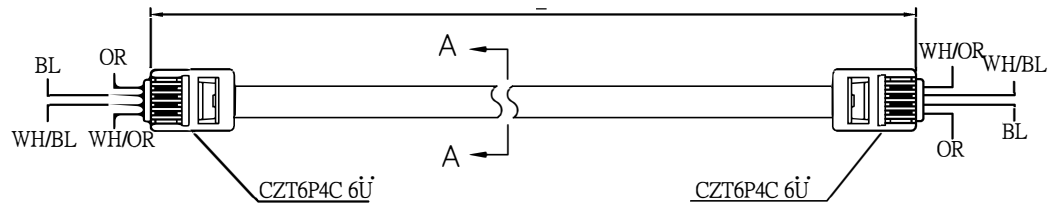


**SPECIFICATION DRAWING**

<b>Customer</b>	
<b>P/N</b>	L-DW4A-DE-XX
<b>WKM</b>	R
<b>Description</b>	<b>Revision</b>

Passed RoHS standard



<b>S/R NO:807-194</b>	
<b>Wire Specification</b>	1x0.5x $\varnothing 0.85 \times 2$ CTwist (twist pitch:70)x2pair+500D fibrex $\varnothing 3.8 \pm 0.1$ (tubulate jacket)
<b>Jacket Colour</b>	80151(GY)
<b>Conductor</b>	1x0.5
<b>Insulation Colour</b>	(BL,WH/BL) (OR,WH/OR)( $\varnothing 0.85 \pm 0.05$ ) PP /
<b>Cut Length</b>	7625
<b>Normal Length</b>	/
<b>Plug</b>	CZT6P4C 6U <span style="float: right;">1:2</span> / /
<b>Terminal</b>	/
<b>Tooling</b>	/
<b>Housing</b>	/
<b>Remarks</b>	Cable tie(WH):L-100 <span style="float: right;">1:2</span> / / / / / / /

REV.	Description	Date
0	ISSUED VERSION	2006.09.28

<b>Date</b>	
<b>Tab By</b>	
<b>Checked By</b>	

<b>Drawn By</b>	<b>Checked By</b>	<b>Approved By</b>	<b>Tooling</b>	<b>Weight(g)</b>	<b>Unit</b>
					mm

<b>Date</b>	<b>Projection</b>
2006.09.28	